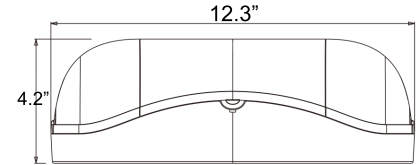
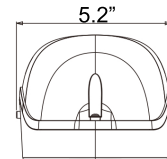


EL-WP



TECHNICAL SPECIFICATIONS:

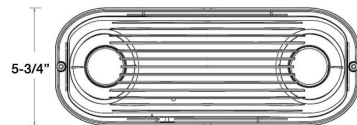
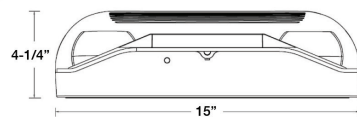
- :: High impact thermo-plastic emergency light with polycarbonate cover available in Wet location with seamless silicon gasket
- :: Two fully adjustable 6-watt LED lamp heads for safe egress
- :: Improved beam control for increased spacing and illumination
- :: Dual voltage: 120/277
- :: Operating temperature: 68-122°F
- :: 6V maintenance-free lead acid rechargeable battery for long life
- :: Low profile compact design
- :: 90-minute rated with push style test switch and red indicator light
- :: Mounting: wall mounting with KO's in back plate
- :: UL-listed for wet locations
- :: 3-year warranty



WET LOCATION LED 2-HEAD EMERGENCY LIGHT

CATALOG NO.	HOUSING	HEADS	VOLTAGE	BATTERY	NOTES
EL-WP	White	(2) 6W	120/277V	6V Ni-MH	Universal mount: wall & ceiling

EW-16-WP-LED



TECHNICAL SPECIFICATIONS:

- :: High impact thermo-plastic emergency light with polycarbonate cover available in Wet location with seamless silicon gasket
- :: Two fully adjustable 3.3-watt LED lamp heads for safe egress
- :: Improved beam control for increased spacing and illumination
- :: Dual voltage: 120/277
- :: Operating temperature: 68-122°F
- :: 6V maintenance-free lead acid rechargeable battery for long life
- :: Low profile compact design
- :: 90-minute rated with push style test switch and red indicator light
- :: Mounting: wall mounting with KO's in back plate
- :: UL-listed for wet locations, meets UL924, NFPA 101 Life Safety Code (Only for EW-16-WP)
- :: 3-year warranty



WET LOCATION MR16 EMERGENCY LIGHTS

CATALOG NO.	HOUSING	HEADS	VOLTAGE	BATTERY	NOTES
EW-16-WP-LED	Gray	(2) 3.3W	120/277V	6V Lead Acid	Universal mount: wall & ceiling

H17